



ROCKINGHAM COUNTY WINGS

Chapter NC-W

Eden, NC



April 2007

2007 STAFF

Chapter Directors
Darrell & Kay Hopper

Asst. Chapter Directors
Molly & Wayne Byrd

Chapter Couple
Lawrence & Lois Shumate

Chapter Educators
Wayne & Molly Byrd

Secretary / Treasurer
Rodger & Betty Hodges

Newsletter Editors
Paul & Sally Kelley

Ride Coordinators
Joe Chatman
Tony Pendergraph
Rickey Vernon

Recruit & Retention
Clyde & Debbie Lawrence

Ways & Means
Rickey & Carolyn Vernon

Sunshine Lady
Linda Pendergraph

Phone Tree Lady
Barbara Chatman

Historians
Bobby & Jewell Walker

* * * * *

We gather the 3rd Monday at
The Golden Corral at
1566 Freeway Drive
Reidsville, NC
6:30 meal 7:30 meeting

Please visit our website at
www.gwrranc.org

FROM THE CHAPTER DIRECTORS

Hello fellow Gold Wings,

Spring has finally got here along with rally season. By the time you read this, we would have already gone to H2's swap meet. We're sure that everyone had a good time.

We are finalizing our own Rally which is going to be April 14th. All Chapter members are asked to meet at our house on March 30, 2007, at 7:00 p.m. Bring all of the door prizes and stuffing for the goodie bags that you have collected. We would like to stuff the goodie bags and decide which door prizes will be the special door prizes. We also ask that you let us know which jobs you would like to do at the rally. If anyone asks about the camera we are selling tickets for, it is a Kodak 7 pixel, 10x zoom, with a 3-second shutter speed. We also have several prizes that we will be giving for those of you who work the Rally.

Bobby Walker is looking for pictures of former CDs to put in our scrap book. If anyone has photos of either Lonnie Casper or Keith Brightwell, please let him know.

As many of you know, Darrell was supposed to have surgery in March. That surgery has been postponed because his blood sugar was too high. Who would have believed that he was just too sweet. The doctors have put him on insulin to bring it down and those shots are working. We will keep you posted as to when he is rescheduled for surgery. Please keep him in your prayers.

Ride safe,
Darrell and Kay Hopper

Don't forget our Poot-n-Scout Rally on April 14th

Visit our website at www.gwrranc.org



FROM THE ASSISTANT CHAPTER DIRECTORS

Since we have so many new participants in our Chapter, I thought I'd write about our upcoming Pinto Bean Rally which is April 14, 2007. Before now, we had served hot dogs and hamburgers, but this year we are trying something new. And it's a lot earlier than we normally have our Rally, so we have been in quite a rush to get everything done. For some of you who have never helped with the Rally, you might be asking, "What is there to do?"

Well, first of all, there are lots of things that are done before we even get to April 14. One of the most important things you as a Chapter participant can do is gather door prizes. We need lots of them!! They can be big or small in monetary value. Go to places at which you do business and ask them for a donation. The worst thing they can do is say, "No." Use the "donation letters" that are available. What do we want? EVERYTHING!! We'll take anything from pens and pencils to put in the goodie bags to t-shirts and gift certificates to use as door prizes. Use your imagination. Some of our participants have made door prizes using their own skills. Your next question, I know, is "How do people get a door prize?" That's where the games come in. People who register for our Rally are eligible to play the games we have set up. We have quite a variety from "Wheel of Fortune" to some new games we plan to introduce this year such as "Pin the Chrome on the Motorcycle" and "Toilet Seat Football." People pay for chances to play the games and win tickets. Then they take the tickets and put them in envelopes for a chance to win a prize. It's that simple. So, in addition to getting door prizes, we need people to help with the games. It is lots of fun and you get to meet lots of people, many of whom you'll see over and over as we go to other Chapters' events.

Then there is the matter of feeding the crowd we are expecting. We will need people to cook and serve, set up tables, and everything in between. But before then, we'll need people to set up tents, fix the goodie bags, and just generally make sure that everything is ready when the Rally starts.

I know I haven't covered everything that will happen before the Rally or at the Rally, but let me tell you a little story. The first year I belonged to Chapter W, I found someone who looked like they knew what they were doing. I knew she had been a participant of Chapter W for a lot longer than I had. I told her I was going to be her shadow and to tell me what to do and, if necessary, how to do it. She never hesitated to tell me to stuff hot dogs in buns or grab a broom to clean up when it was all over. So, that is my suggestion to you. Find a "buddy." My buddy that year was Laverne McClary. If it sounds like somebody is barking out orders, it's not because they don't appreciate what you are doing; it's because there are lots of things to do to put on an event such as this and, unfortunately, not enough time for one person to tell everyone what to do. So grab your buddy and be ready to put in a full day's work as we make this Rally our biggest ever!!

Before we even get started, I want to thank every one of you for your participation in this very important fundraiser for Chapter W and the many charities to which we contribute every year.

Molly and Wayne Byrd
Assistant Chapter Directors
Chapter NC-W

Visit our website at www.gwrranc.org



FROM THE CHAPTER EDUCATORS



Cornering On 2 Wheels

A very important part of the cornering technique is LEAN. How do you lean the motorcycle and how quickly is this done? Some riders slowly enter a corner and never seem to get the motorcycle leaned over. In fact, the longer you take setting the lean angle the less likely you are to predict precisely where you will exit the corner. You should look at where you want to go, or to the exit of the turn, and then quickly set the lean angle to accomplish the desired turning radius. Note the separation of the LOOK and LEAN steps of the technique.

How do you lean a motorcycle? You press on the handlebar in the direction of the curve. In other words "Press right, go right." "press left, go left." The duration and quickness of the press determines the arc of the curve. During the leaning step, make sure your body remains one with the motorcycle. This is not a swerve, but a turn. The sooner you place the motorcycle at the proper lean angle, the sooner it stabilizes. Once you set the lean angle, then you can start doing your only job in a turn or curve which is relaxing and rolling the throttle to at least maintain your speed or accelerate through the turn or curve.

Most riders look and lean simultaneously. Think about this. How can you know where you want to go, or the required lean angle, if you don't look before you enter the corner? Remember visual directional control. Again this is elementary, but very true. You must separate the look/lean steps of the cornering technique. There needs to be a defined look before the motorcycle is leaned. (In your car, did you not completed all of the braking and looking through the turn before you turned the steering wheel?) Practice looking and then leaning for turning corners. Exaggerate the steps to insure separation. If you don't look BEFORE you lean, most of the time you will make a mid-course correction in the turn. What was your only job in a curve? Relaxing and rolling the throttle. The same applies to turning a corner.

Molly and I have tried to make you aware of these techniques during the PLPs on the range. We hope these practice sessions on the range offer you a different perspective to your cornering technique. You can know within inches where you will exit with this technique. Take an MSF Experienced Riders Course, practice this technique, and let us know how you fare.

Ride Smart! Be Safe!
Wayne & Molly
Chapter W Educators



FROM THE CHAPTER COUPLE

Lois and I are still visiting Chapters and trying to steal the Couple's Plaque. So far, we have visited Mount Airy (X-2), Asheboro (P), and Lexington (A-2). We will most likely go to several more meetings before you receive this newsletter.

We have found out from Eddie Allen that C.M. Prince, along with his wife Marlene are the chapter couple for Y-2 Monroe, has been diagnosed with leukemia. Please keep him in your prayers.

We are looking forward to attending the "Couples Meet and Eat" on Saturday April 7, at the Western Charcoal Steakhouse in Burlington.

We will be riding down to Morehead City on April 19 for the Down East Rally. If anyone would like to go with us, let me know.

Ride Safe & God Bless,

Lawrence & Lois Shumate
(NC-W COY)



FROM THE RIDE COORDINATORS



Well, it's about Spring, and time to do a little riding. We haven't done much so far this year. There are a few rides planned, but we would like for you to tell us where you would like to go so we can set up some rides.

One thing I would like to do while writing this article for the newsletter is thank Wayne Byrd for having the PLP (parking lot practice). Even though he has a trike, he takes time to come out and set up a course for us with bikes to practice our riding skills. Some of us need it a little more than others. Wayne does not so much teach us, but shows us the right way to ride. I have seen a few bad habits that I have and, with practice and Wayne's help, I will break them. With Wayne's directions and the PLP, we could become a sharp group of riders. I think he would like all of our support. So let's get the dust off the bikes and do a little riding.

Rickey Vernon
Chapter W – Ride Coordinator



FROM THE NEWSLETTER EDITORS



Sally and I are attending rallies in Daytona and Kissimmee, FL, as well as in Dublin, GA. We will return at the end of this month. See you then.


Paul and Sally



FROM THE SUNSHINE LADY



Birthdays		Anniversaries	
4/6	Joe Chatman	4/8	Rodger and Betty Hodges
4/7	Tony Pendergraph		
4/10	Donald Soyars		
4/30	Elzie Puckett		



EVENTS

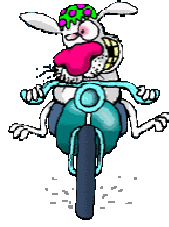


April

14 - Poot-n-Scoot Bean Rally @ Madison -- Dan Valley Community Building
21 - PLP

Visit our website at www.gwrranc.org

UPCOMING RIDES



March

3-24 Doug's A Wing and A Chair Open House, Monroe N.C

April

4-7 Bunny Ride to Morehead Hospital, Eden N.C.
4-15 Benefit Ride for Dave Galloway and Mike Murphy (MSF), Kinston, N.C.
4-27-29 Chapter W Couples Ride to Myrtle Beach, S.C.



1989 GL1500 Goldwing, 96,712 mi. Blue/green Pinstripping by Charlie Buzzard, Chrome assy. Driving lights, Trailer Hitch. New timing belts installed at Appox. 76,000 mi. \$5500.00

Matching Cyclemate Windraider \$2000.00 Selling because we bought a trike.

Tony Pendergraph Hm.# 336-349-8757 Cell# 336-207-8757 – tpendergraph@gwrrancw.org

.....

2005 (30th Anniversary) Gold Wing w/ ABS, White, Showroom Condition, Garage Kept, 7200 miles, CB, Corbin heated seat, trunk rack, highway boards, 2 matching white Arai ¾ helmets with J&M headsets, \$16,500.

Don or Pat Anderson at Hm.# 910-355-3538 – andynpat@charter.net

Visit our website at www.gwrranc.org

**2007 North Carolina District,
Region N, & Nearby
Events Calendar**

DATE	HOST CHAPTER	LOCATION
	<i>January</i>	
	<i>February</i>	
	<i>March</i>	
17	NC-H2 Swap Meet	Mebane, NC
24-25	NC Rider Education Rodeo	West Jefferson, NC
31	NC-Y2 Open House	Iron Horse Cycle Center - Monroe, NC
	<i>April</i>	
7	Chapter Couples Meet & Eat	TBA
14	NC-W Pinto Bean Rally	Madison, NC
20 - 21	Down East Rally	Morehead City, NC
22	NC-E2 Poker Run	Elizabeth City, NC
26 - 28	TN District Rally - Spring Fling	Pigeon Forge, TN
	<i>May</i>	
5	NC-G Open House	Honda Cycle Center - Asheboro, NC
6	NC-E Triangle Ride For Kids	TBA
12	NC-F2 Open House & Meeting	Team Powersports - Garner, NC
19	NC-T2 Care Bear Ride	Albemarle, NC
25 - 26	NC-U Chicken Rally	Lumberton, NC
	<i>June</i>	
9	NC-R Care Bear Ride	Thomasville, NC
16	NC-Q2 Fun Fest	Newton Grove, NC
23	NC-A2 Care Bear Ride	Lexington, NC
	<i>July</i>	
4 - 7	Wing Ding	Billings, MT
	<i>August</i>	
4	WOS Planning Meeting	Ramada Inn - Burlington, NC
10 - 12	W. VA District Rally	TBA
23 - 25	KY District Rally	Somerset, KY
26	NC Couples Picnic	Lake MacIntosh - Burlington, NC
	<i>September</i>	
20 - 22	Wings Over The Smokies	Fletcher, NC